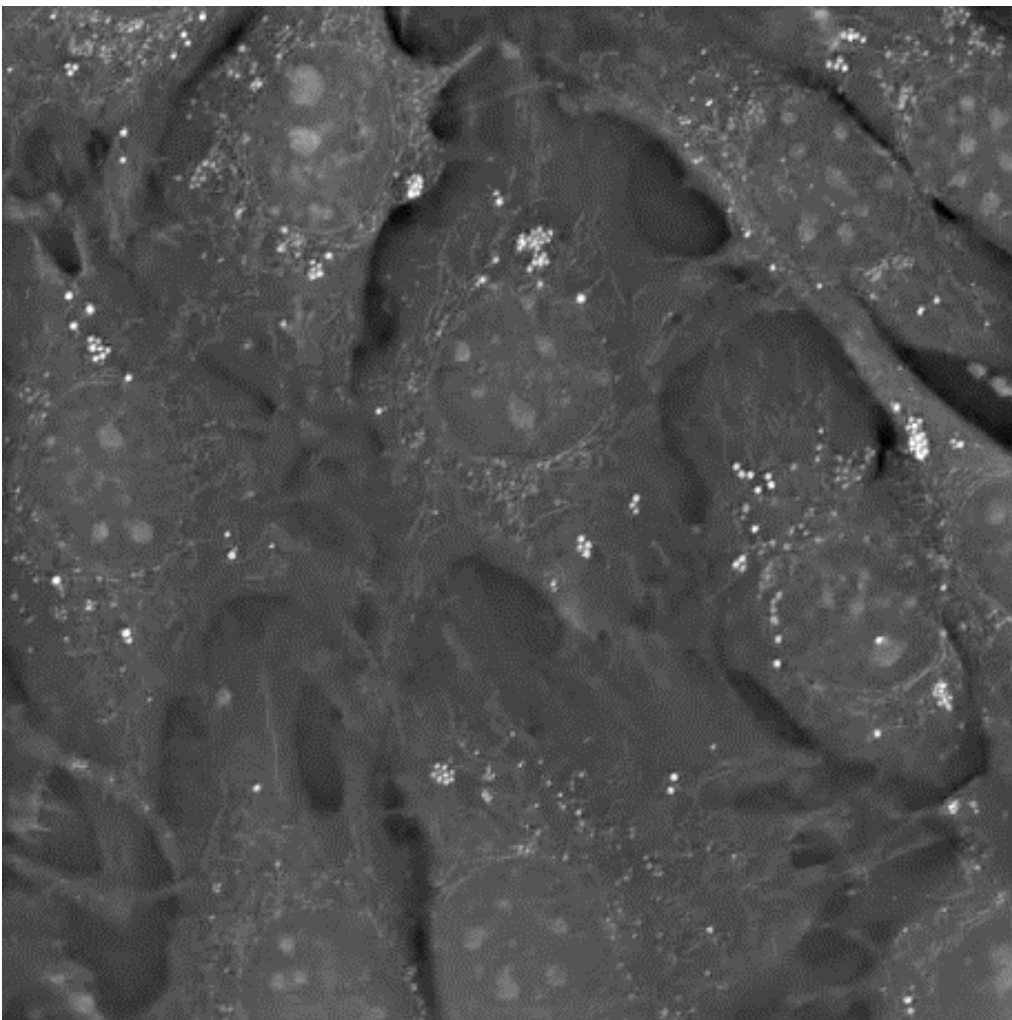


NANOLIVE STAGE-TOP INCUBATOR

- Incubator applications and benefits
- Components and features
- Imaging compatibility
- User friendly

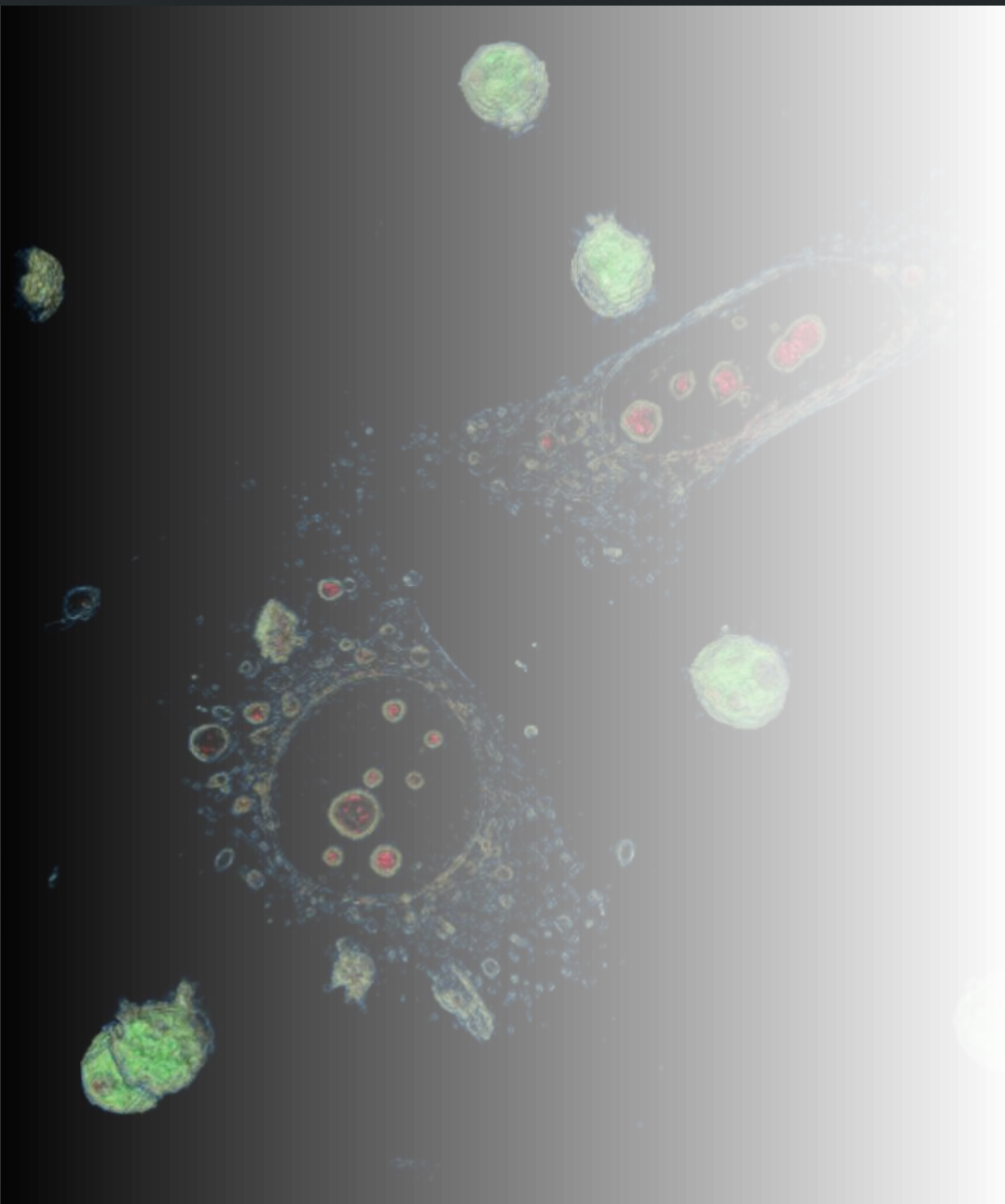


Mouse Preadipocytes in proliferation - **48 hours**

On-stage incubator benefits:

- High precision temperature, CO₂ and O₂, humidity control during experiment
- Low volume of gas required
- Minimal gas and humidity leakage
- Adaptable to different labware format (i.e. slides, 35mm dishes, multi-well plates etc.)
- Compatible with microfluidic and perfusion systems
- Easy access to cells during the experiment
- High optical accessibility and quality





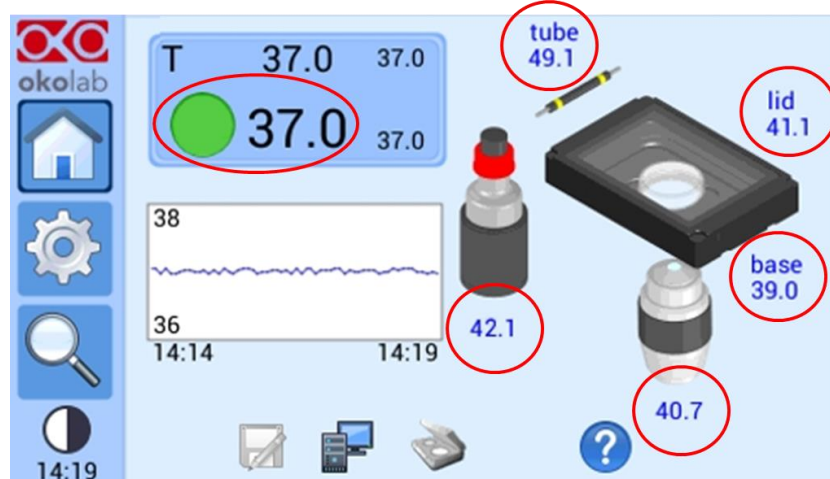
NANOLIVE STAGE-TOP INCUBATOR

- Incubator applications and benefits
- Components and features
- Imaging compatibility
- User friendly



TOP-STAGE CONTROLLER

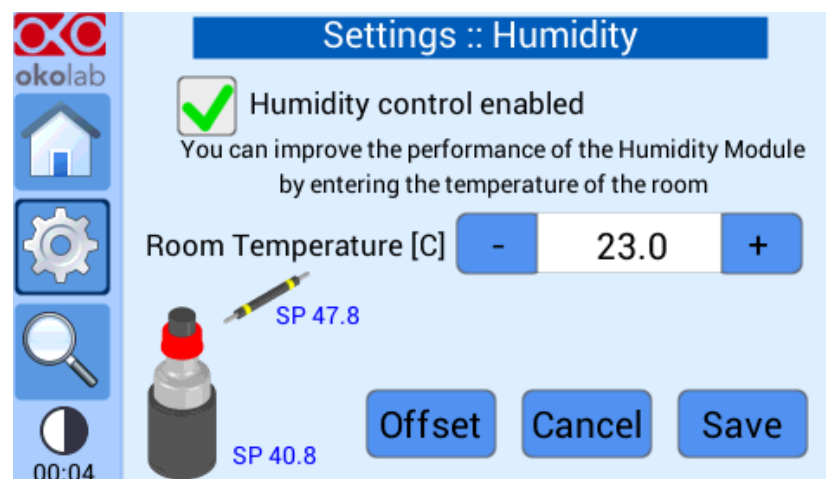
- Temperature Accuracy: $\pm 0.1^{\circ}\text{C}$ in sample feedback mode and $\pm 0.3^{\circ}\text{C}$ in chamber feedback mode
- Temperature Range: 25 to 50 $^{\circ}\text{C}$
- 4.3" touch screen interface
- Memory for data logging and mini-USB port for data download
- Includes an external T-Sensor for sample feed-back operation





HUMIDIFIER

- Controlled via top-stage controller
- Humidification through combined action of a heated bubbling column and a heated tube
- Powerful humidifier to ensure ca. 90% of relative humidity inside the top-stage incubator





2GF-MIXER

- Pre-mixed gas flow rate can be regulated manually in the range 0.6-1 l/min
- CO₂ range: 0-15%
- Manual Gas Mixer resolution: 1%
- Filtering device: PTFE membrane (0.2 micron pores)
- Dimensions (LxWxH, mm): 220x128x178 mm
- Weight: 3.0 kg



GAS REGULATOR

- Pre-mixed gas flow rate can be regulated manually in the range 0.1-0.4 l/min



3GF-MIXER-HYPOXIA

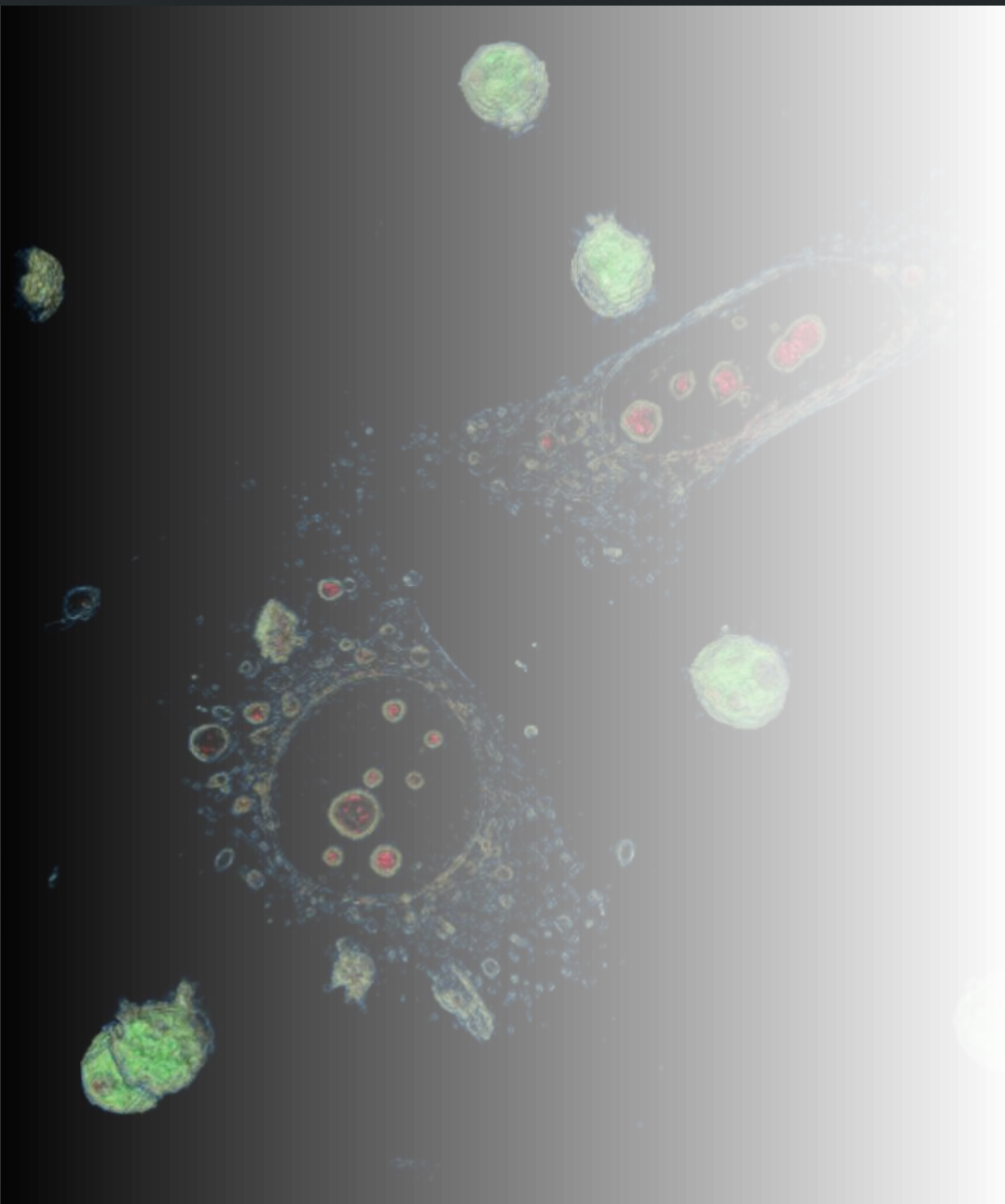
- 3 gas mixer (Carbon Dioxide, Nitrogen, Air)
- O₂ range: 2-20%





HEATING COLLAR

- Easy installation around the objective
- Stand alone controller
- Eliminates undesired sample cooling



NANOLIVE STAGE-TOP INCUBATOR

- Incubator applications and benefits
- Components and features
- Imaging compatibility
- User friendly



1x35-M single
For #1 35mm petri-dish



1x60-M single
For #1 60mm Petri-dish



1xLABTEK-M single
For #1 Lab-Tek 1"x2" chambered cover glass



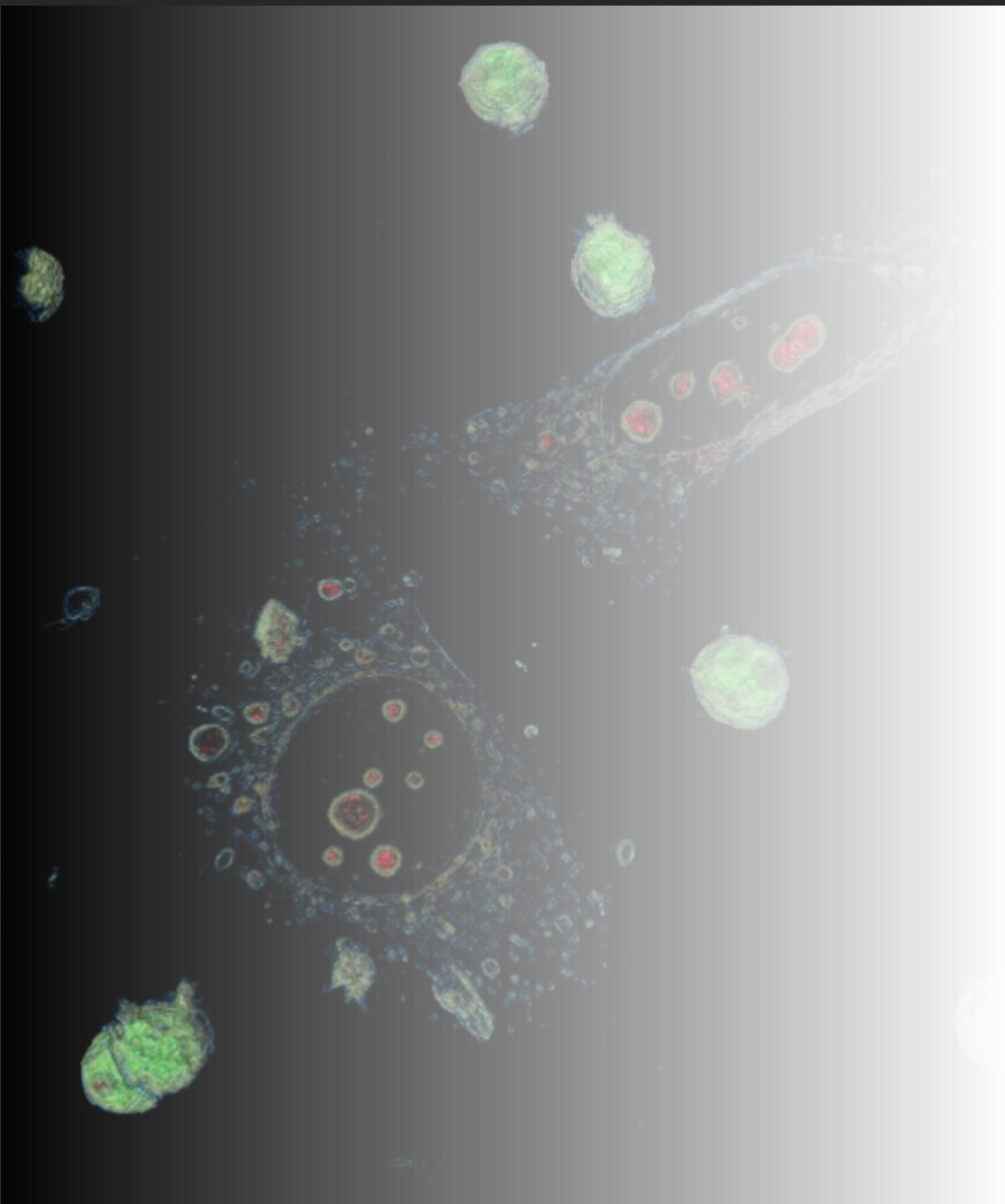
1xGS-M single
For #1 1"x3" chamber slide



1xLABTEK-II-M single
For #1 Lab-Tek II 1"x2" chambered cover glass

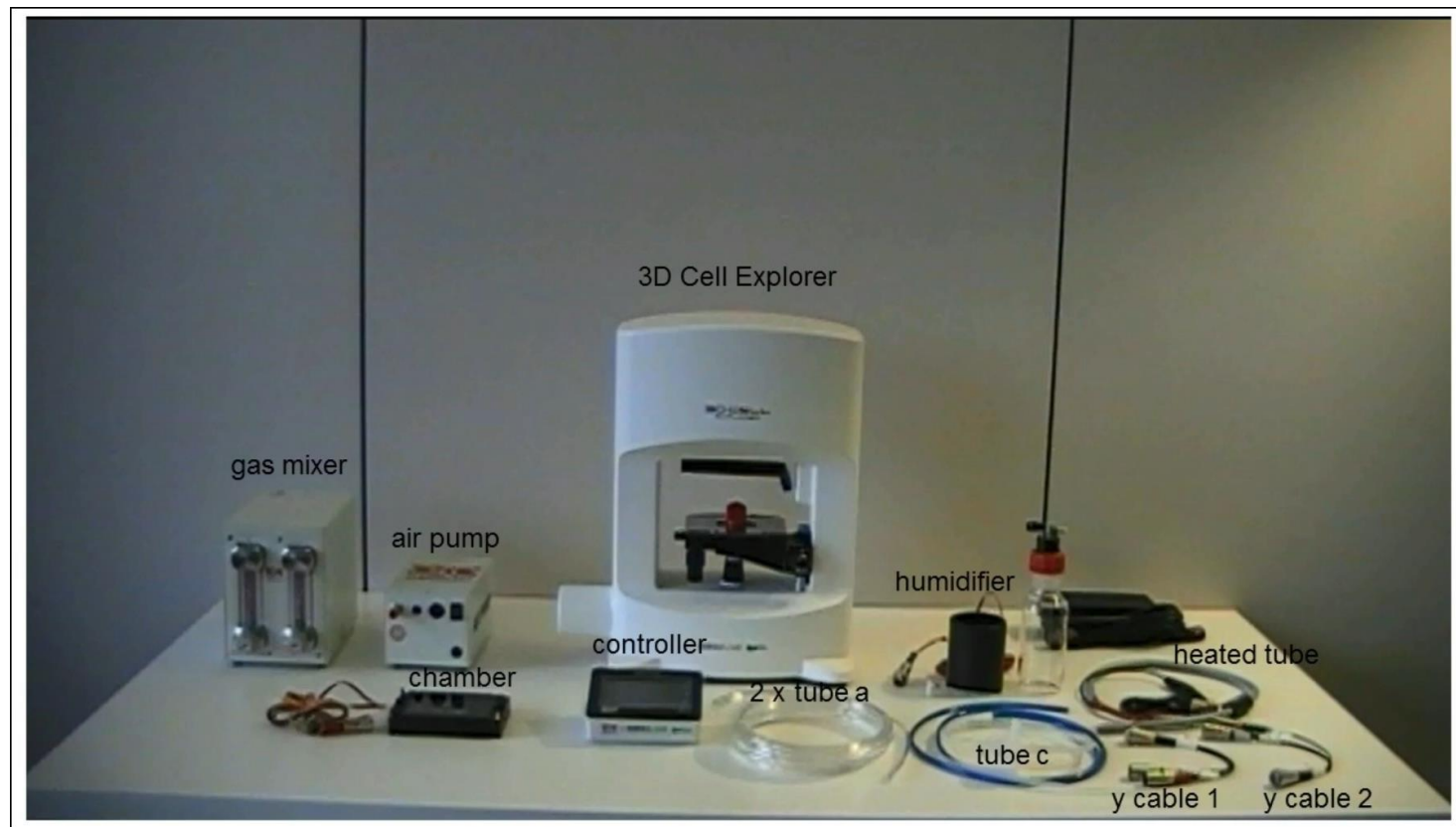
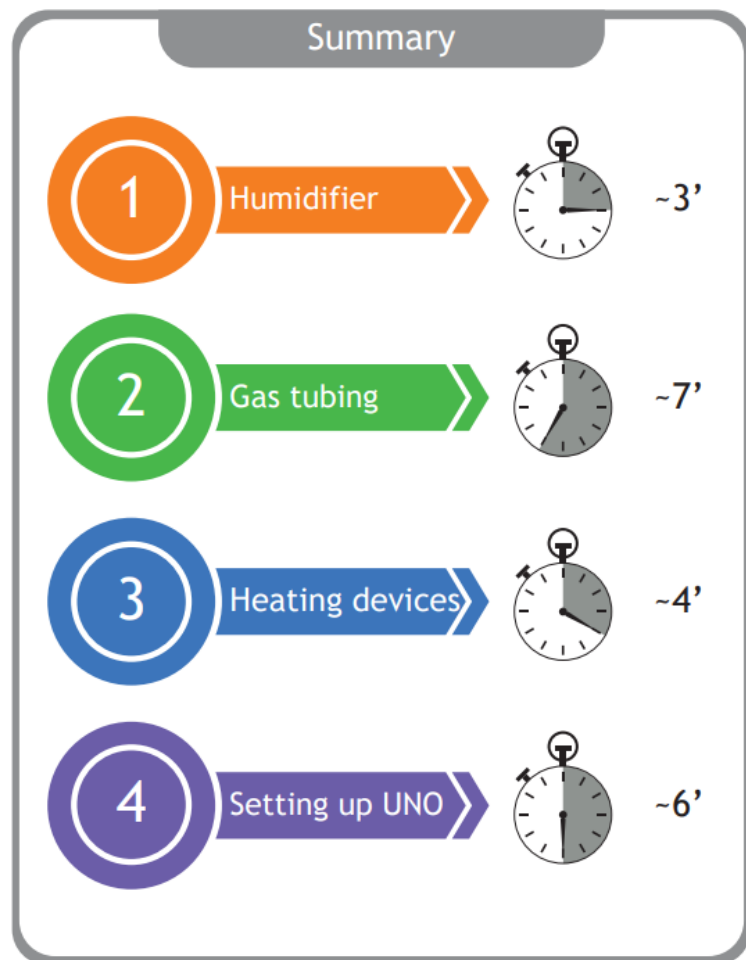
CAMBER (H301-MINI) includes:

- Magnets for reliable holding to the stage
- Magnetic insert for **GS-M single** and **35-M single**, others available for purchase
- Glass top lid for perfect atmosphere control and sample access
- Built-in perfusion holes for insertion of tubing



NANOLIVE STAGE-TOP INCUBATOR

- Incubator applications and benefits
- Components and features
- Imaging compatibility
- User friendly



How to set up video here: <https://www.youtube.com/watch?v=CVVSjq-hXqU&feature=youtu.be>

Don't hesitate to ask to our support team Nanolive Incubation and Imaging best practices!
Lear more about growing and filming living cells [on our application note](#).